

## Sun StorEdge™ T3 Workgroup Array

Capacity and performance requirements are easily met by the Sun StorEdge™ T3 Workgroup Array's scalable architecture.



### High performance

Full-fibre RAID controller with 1-GB cache enables you to scale performance for virtually any application. In addition, storage management and configuration are kept separate from data traffic for maximum performance.

### High availability

Features such as redundant, hot-swappable components and cached write data stored automatically to disk in case of power failure help keep your business up and running.

### Open

Open system connectivity means support for heterogeneous environments, including Windows NT, Windows 2000, Linux, IBM-AIX, HP-UX, and Solaris™ Operating Environment hosts.

### Secure

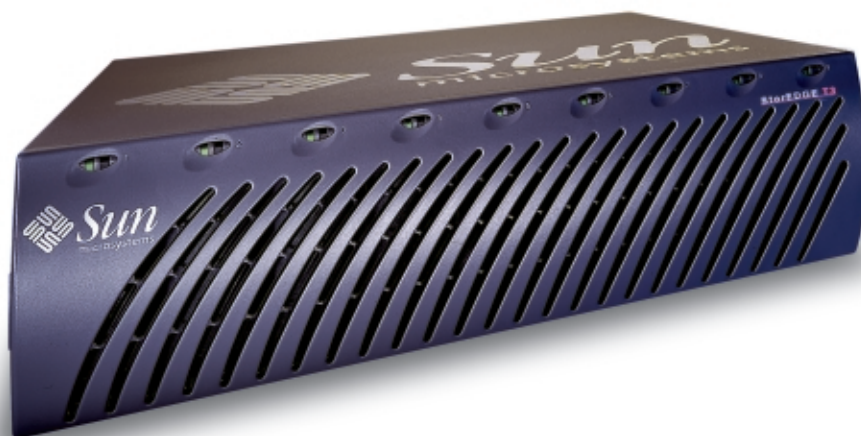
LUN slicing and LUN masking functionality provide security for up to 16 separated LUNs.

### Comprehensive support

Proactive services, responsive support, and technical expertise are provided in more than 170 countries through Sun's service organization.

The Sun StorEdge™ T3 workgroup array offers a highly reliable, flexible, and scalable approach to network storage computing. Its high-performance, 1-GB cache, fibre-channel RAID controller controls an array of nine disk drives. Four different drive choices allow this array to be cost-effectively configured to deliver exceptional performance for transactive- or transfer-intensive application workloads. The Sun StorEdge T3 workgroup array delivers outstanding three-way scalability. As capacity is expanded, performance is increased in a linear and predictable manner, while availability and reliability remain constant as more cache, data paths, and redundant hot-swap components are added. Granular LUN control with security masking further increases the exceptional flexibility and configurability of this modular storage array subsystem.

Sun StorEdge Complete Storage Solutions—providing you with comprehensive hardware, software, and services to solve your business challenges enterprise-wide.



# Sun StorEdge™ T3 Workgroup Array Specifications

## Standard Interfaces

Drives	Dual-ported FC-SCA-2 (3.5-in. drives)/Nine per enclosure
Back panel	Native LC fibre-channel connection RJ45 10/100 Base-T network connector RJ45 RS-232 connector Loop cards DB-9 connector Power connector CEE 22-V (latching, U.S. only) Power cables Two NEMA 5-15P

## Maximum Total Capacity

36 GB (10K or 15K RPM)	2.6 TB max cabinet (72 drives) 82.9 TB max tested system (32 cabinets)
73 GB (10K RPM)	5.2 TB max cabinet (72 drives) 169.1 TB max tested system (32 cabinets)
181 GB (7200 RPM)	13.0 TB max cabinet (72 drives) 417.0 TB max tested system (32 cabinets)

## Hardware

Supported hardware	Sun Fire™ 280R, 3800, 4800, 4810, 6800, V480, V880, 12K, and 15K servers Sun Enterprise™ 220R, 250, 420R, 450, 3X00-6X00, and 10000 servers Ultra™ 60, 80 workstations Netra™ t 1120/1125, 1400/1405, 20 servers Intel Pentium III or higher (Microsoft Windows NT, Windows 2000, Linux) HP 9000 N- or L-Class IBM RS/6000
--------------------	--

## Host Connectivity

Supported host bus adapters	Sun-1 Gb PCI (single and dual) and 1 Gb cPCI (dual) fabric adapter (optical) Sun-2 Gb PCI (single and dual) fabric Sun-SBus FC-AL adapter (optical GBIC) Microsoft-Emulex L8000F1-N1 (Windows environment) HP A5158A* (HP-UX environment) IBM FC6227* (IBM-AIX environment) Linux-QLogic QLA2200F/66* (Linux environment)
-----------------------------	---

\*Note: All non-Sun host bus adapters supported by third-party vendor.

## Software

Operating environment per enclosure	Solaris™ Operating Environments 2.6, 7, 8, 9 Microsoft Windows NT 4.0 (SP6 and SP6A) Microsoft Windows 2000 Advanced Server (SP2) Red Hat Linux 7.2 IBM AIX 4.3.3, 5.1L HP-UX 11.0
Supported software	Sun StorEdge™ Configuration Service software (included) Storage Automated Diagnostic Environment (included) Sun StorEdge™ Component Manager software (optional) Sun StorEdge™ Management Console software (optional) Sun StorEdge™ Enterprise Storage Manager software Sun™ Cluster 3.0 software

## Storage Network Interconnect

Fibre-channel loop topology connectivity  
Fabric point-to-point (p2p) topology connectivity

## Controller Card

One RAID controller card/tray	RAID level 0, 1+0, 5 Up to 16 LUNs per unit LUN masking/slicing
-------------------------------	---

## Controller Card (continued)

One RAID controller card/tray	Network Time Protocol (NTP) support Persistent Group Reservation (PGR) support Configurable hot spare Single host FC-AL interface Two FC-AL drive loops Dual-speed network connection RS-232 serial service port 1-GB data cache Hardware pipelined XOR
-------------------------------	---

## Field Replaceable Units\*

Drives	Front
Power/cooling units	Rear
Loop cards	Rear
Controller card	Rear

\*All FRUs are hot-swappable and have FRU IDs

## Preconfigured Storage

RAID 5

## Environment (per enclosure)

Input power	450 W maximum
Input current	5 A maximum
AC power	100-240 VAC @ 47-63 Hz single phase
Heat output	1540 BTU/hr, maximum
Operating	5° C to 35° C (41° F to 95° F)
Altitude	-305 m (-1000 ft.) to +3048 m (+10,000 ft.)
Shock	4.0 g for maximum duration of 11 ms (half-sine wave)
Vibration	5 to 500 Hz @ 0.25 g sinusoidal
Nonoperating	-20° C to 60° C (-4° F to 149° F)
Altitude	-305 m (-1000 ft.) to +12,192 m (+40,000 ft.)
Shock	10.0 g for maximum duration of 11 ms (half-sine wave)
Vibration	5 to 500 Hz @ 1.0 g sinusoidal

## Power and Cooling

Power/cooling units	Two per enclosure Integrated backup battery power for cache destage Auto-ranging power supplies Dual line cords and redundant fans
---------------------	---

## Regulations

Meets or exceeds the following requirements:	
RFI/EMI	FCC Class A
Safety	UL/CSA, CE, Y2K compliant, FC-AL standards

## Dimensions and Weight

Height	13.97cm (5.5 in.) (3.5U)
Width	44.45 cm (17.5 in.)
Depth	46.99 cm (18.5 in.)
Weight	30.15 kg (67 lb. maximum, with half-height drives)

## Upgrades

Sun StorEdge hardware and competitive trade-ins are available.

## Warranty/Service

Two-year	Sun two-year standard warranty
Service upgrades	SunSpectrum™ service upgrades are available.

For additional information on this product, go to [www.sun.com/storage/t3wg](http://www.sun.com/storage/t3wg)

Sun Microsystems, Inc. 4150 Network Circle, Santa Clara, CA 95054 USA Phone 1-800-555-95UN or 1-650-960-1300 Web [sun.com/storage](http://sun.com/storage)



ARGENTINA: +5411-4317-5600; AUSTRALIA: +61-2-9844-5000; AUSTRIA: +43-1-60563-0; BELGIUM: +32-2-704-8000; BRAZIL: +55-11-5187-2100; CANADA: +905-477-6745; CHILE: +56-2-3724500; COLOMBIA: +571-629-2323; COMMONWEALTH OF INDEPENDENT STATES: +7-502-935-8411  
CZECH REPUBLIC: +420-2-3300-9311; DENMARK: +45 4556 5000; EGYPT: +202-570-9442; ESTONIA: +372-6-308-900; FINLAND: +358-9-525-561; FRANCE: +33-134-03-00-00; GERMANY: +49-89-46008-0; GREECE: +30-1-618-8111; HUNGARY: +36-1-489-8900; ICELAND: +354-563-3010  
INDIA: BANGALORE: +91-80-2298989/2295454; NEW DELHI: +91-11-6106000; MUMBAI: +91-22-697-8111; IRELAND: +353-1-8055-666; ISRAEL: +972-9-9710500; ITALY: +39-02-641511; JAPAN: +81-3-5717-5000; KAZAKHSTAN: +7-3272-466774; KOREA: +822-2193-5114  
LATVIA: +371-750-3700; LITHUANIA: +370-729-8468; LUXEMBOURG: +352-49 11 33 1; MALAYSIA: +603-21161888; MEXICO: +52-5-258-6100; THE NETHERLANDS: +00-31-33-45-15-000; NEW ZEALAND: AUCKLAND: +64-9-976-6800; WELLINGTON: +64-4-462-0780; NORWAY: +47 23 36 96 00  
PEOPLE'S REPUBLIC OF CHINA: BEIJING: +86-10-6803-5588; CHENGDU: +86-28-619-9333; GUANGZHOU: +86-20-8755-5900; SHANGHAI: +86-21-6466-1228; HONG KONG: +852-2202-6688; POLAND: +48-22-8747800; PORTUGAL: +351-21-4134000; RUSSIA: +7-502-935-8411  
SINGAPORE: +65-6438-1888; SLOVAK REPUBLIC: +421-2-4342-94-85; SOUTH AFRICA: +27-11-256-6300; SPAIN: +34-91-596-9900; SWEDEN: +46-8-631-10-00; SWITZERLAND: GERMAN: 41-1-908-90-00; FRENCH: 41-22-999-0444; TAIWAN: +886-2-8732-9933; THAILAND: +662-344-6888  
TURKEY: +90-212-335-22-00; UNITED ARAB EMIRATES: +9714-3366333; UNITED KINGDOM: +44-1-276-20444; UNITED STATES: +1-800-555-95UN OR +1-650-960-1300; VENEZUELA: +58-2-905-3800; OR ONLINE AT [SUN.COM/STORE](http://SUN.COM/STORE)

SUN™ ©2002 Sun Microsystems, Inc. Sun, Sun Microsystems, the Sun logo, Sun StorEdge, Solaris, Sun Fire, Sun Enterprise, Ultra, Netra, and SunSpectrum are trademarks, registered trademarks, or service marks of Sun Microsystems, Inc., in the United States and other countries. LFC 1.8 Printed in USA 12/02 DE1074-4/5K