



Font Administrator User's Guide

Sun Microsystems, Inc.
4150 Network Circle
Santa Clara, CA 95054
U.S.A.

Part No: 816-0281-10
May 2002

Copyright 2002 Sun Microsystems, Inc. 4150 Network Circle, Santa Clara, CA 95054 U.S.A. All rights reserved.

This product or document is protected by copyright and distributed under licenses restricting its use, copying, distribution, and decompilation. No part of this product or document may be reproduced in any form by any means without prior written authorization of Sun and its licensors, if any. Third-party software, including font technology, is copyrighted and licensed from Sun suppliers.

Parts of the product may be derived from Berkeley BSD systems, licensed from the University of California. UNIX is a registered trademark in the U.S. and other countries, exclusively licensed through X/Open Company, Ltd.

Sun, Sun Microsystems, the Sun logo, docs.sun.com, AnswerBook, AnswerBook2, and Solaris are trademarks, registered trademarks, or service marks of Sun Microsystems, Inc. in the U.S. and other countries. All SPARC trademarks are used under license and are trademarks or registered trademarks of SPARC International, Inc. in the U.S. and other countries. Products bearing SPARC trademarks are based upon an architecture developed by Sun Microsystems, Inc. The code and documentation for the DtComboBox and DtSpinBox widgets were contributed by Interleaf, Inc. Copyright 1993, Interleaf, Inc.

The OPEN LOOK and Sun™ Graphical User Interface was developed by Sun Microsystems, Inc. for its users and licensees. Sun acknowledges the pioneering efforts of Xerox in researching and developing the concept of visual or graphical user interfaces for the computer industry. Sun holds a non-exclusive license from Xerox to the Xerox Graphical User Interface, which license also covers Sun's licensees who implement OPEN LOOK GUIs and otherwise comply with Sun's written license agreements.

Federal Acquisitions: Commercial Software—Government Users Subject to Standard License Terms and Conditions.

DOCUMENTATION IS PROVIDED "AS IS" AND ALL EXPRESS OR IMPLIED CONDITIONS, REPRESENTATIONS AND WARRANTIES, INCLUDING ANY IMPLIED WARRANTY OF MERCHANTABILITY, FITNESS FOR A PARTICULAR PURPOSE OR NON-INFRINGEMENT, ARE DISCLAIMED, EXCEPT TO THE EXTENT THAT SUCH DISCLAIMERS ARE HELD TO BE LEGALLY INVALID.

Copyright 2002 Sun Microsystems, Inc. 4150 Network Circle, Santa Clara, CA 95054 U.S.A. Tous droits réservés

Ce produit ou document est protégé par un copyright et distribué avec des licences qui en restreignent l'utilisation, la copie, la distribution, et la décompilation. Aucune partie de ce produit ou document ne peut être reproduite sous aucune forme, par quelque moyen que ce soit, sans l'autorisation préalable et écrite de Sun et de ses bailleurs de licence, s'il y en a. Le logiciel détenu par des tiers, et qui comprend la technologie relative aux polices de caractères, est protégé par un copyright et licencié par des fournisseurs de Sun.

Des parties de ce produit pourront être dérivées du système Berkeley BSD licenciés par l'Université de Californie. UNIX est une marque déposée aux Etats-Unis et dans d'autres pays et licenciée exclusivement par X/Open Company, Ltd.

Sun, Sun Microsystems, le logo Sun, docs.sun.com, AnswerBook, AnswerBook2, et Solaris sont des marques de fabrique ou des marques déposées, ou marques de service, de Sun Microsystems, Inc. aux Etats-Unis et dans d'autres pays. Toutes les marques SPARC sont utilisées sous licence et sont des marques de fabrique ou des marques déposées de SPARC International, Inc. aux Etats-Unis et dans d'autres pays. Les produits portant les marques SPARC sont basés sur une architecture développée par Sun Microsystems, Inc. Le code et la documentation pour les produits DtComboBox et DtSpinBox ont été fournis par Interleaf, Inc. Copyright 1993, Interleaf, Inc.

L'interface d'utilisation graphique OPEN LOOK et Sun™ a été développée par Sun Microsystems, Inc. pour ses utilisateurs et licenciés. Sun reconnaît les efforts de pionniers de Xerox pour la recherche et le développement du concept des interfaces d'utilisation visuelle ou graphique pour l'industrie de l'informatique. Sun détient une licence non exclusive de Xerox sur l'interface d'utilisation graphique Xerox, cette licence couvrant également les licenciés de Sun qui mettent en place l'interface d'utilisation graphique OPEN LOOK et qui en outre se conforment aux licences écrites de Sun.

CETTE PUBLICATION EST FOURNIE "EN L'ETAT" ET AUCUNE GARANTIE, EXPRESSE OU IMPLICITE, N'EST ACCORDEE, Y COMPRIS DES GARANTIES CONCERNANT LA VALEUR MARCHANDE, L'APTITUDE DE LA PUBLICATION A REpondre A UNE UTILISATION PARTICULIERE, OU LE FAIT QU'ELLE NE SOIT PAS CONTREFAISANTE DE PRODUIT DE TIERS. CE DENI DE GARANTIE NE S'APPLIQUERAIT PAS, DANS LA MESURE OU IL SERAIT TENU JURIDIQUEMENT NUL ET NON AVENU.



020115@3062



Contents

Preface 7

1 Getting Started 11

To Open Font Administrator 11
Font Administrator Main Window 13
 Fonts Menu 14
 Options Menu 14
 Help Menu 15

2 Viewing Fonts 17

To View a List of Fonts 17
 For the Local Host 17
 For a NeWSprint Printer 18
To View Sample Text 18
 For This Session Only 18
 Setting the Default Sample Text 18
To View Font Attributes 19
To View Font Aliases 20
To Find Fonts 21
To Delete Fonts 22

3 Making Fonts Available 23

To Install Fonts 23
 To Resolve Conflicts 25
 To Add the Installation Directory to the Font Path 27

To Modify the Font Path	27
To List the Font Path	28
To Reorder the Font Path	29
To Delete Font Path Elements	29
To Add Font Path Elements	29
To Use the Directory Chooser	30

A Font Administrator Messages 33

path already exists in font path	33
Possible Solution	33
text is not a directory	33
Possible Solution	33
path does not exist	34
Possible Solutions	34
Your system is mounting OpenWindows from a server.	34
Possible Solutions	34
Unable to add the installation directory automatically to the font path	34
Possible Solution	34
Error while saving font path for local printer	35
Possible Solutions	35

B Font Administrator Utilities 37

Adding Font Path Elements (sdtfpadd)	37
Command Syntax	37
Listing Font Path Elements (sdtfpls)	38
Command Syntax	38
Removing Font Path Elements (sdtfprm)	38
Command Syntax	38
Installing Fonts (sdtfontadd)	39
Command Syntax	39
Listing Fonts (sdtfontls)	39
Command Syntax	40
Removing Fonts (sdtfontrm)	40
Command Syntax	40

C Asian Font Sets 43

Searching for Font Sets	43
-------------------------	----

Replacing Font Set Elements 44

Naming Font Sets 46

Index 47

Preface

This guide explains how to use the Font Administrator tool to manage fonts for OpenWindows™ installations and NeWSprint™ printers.

Who Should Use This Book

This book is intended for users and system administrators who use Font Administrator to manage fonts.

How This Book Is Organized

Chapter 1, *Getting Started*, explains how to start Font Administrator and describes the main window.

Chapter 2, *Viewing Fonts*, explains how to view font lists, aliases, and sample text, and also explains how to delete fonts.

Chapter 3, *Making Fonts Available*, explains how to install fonts, modify the font path, and use the directory chooser.

Appendix A, *Font Administrator Messages*, lists error messages along with their probable causes and likely solutions.

Appendix B, *Font Administrator Utilities*, lists and describes the Font Administrator command-line utilities.

Appendix C, *Asian Font Sets*, explains how to use Font Administrator to edit Asian font sets. This appendix only applies to Asian fonts users.

Accessing Sun Documentation Online

The docs.sun.comSM Web site enables you to access Sun technical documentation online. You can browse the docs.sun.com archive or search for a specific book title or subject. The URL is `http://docs.sun.com`.

Typographic Conventions

The following table describes the typographic changes used in this book.

TABLE P-1 Typographic Conventions

Typeface or Symbol	Meaning	Example
AaBbCc123	The names of commands, files, and directories; on-screen computer output	Edit your <code>.login</code> file. Use <code>ls -a</code> to list all files. <code>machine_name%</code> you have mail.
AaBbCc123	What you type, contrasted with on-screen computer output	<code>machine_name% su</code> Password:
<i>AaBbCc123</i>	Command-line placeholder: replace with a real name or value	To delete a file, type <code>rm filename</code> .
<i>AaBbCc123</i>	Book titles, new words, or terms, or words to be emphasized.	Read Chapter 6 in <i>User's Guide</i> . These are called <i>class</i> options. You must be <i>root</i> to do this.

Shell Prompts in Command Examples

The following table shows the default system prompt and superuser prompt for the C shell, Bourne shell, and Korn shell.

TABLE P-2 Shell Prompts

Shell	Prompt
C shell prompt	machine_name%
C shell superuser prompt	machine_name#
Bourne shell and Korn shell prompt	\$
Bourne shell and Korn shell superuser prompt	#

Getting Started

Font Administrator is a graphical tool to assist Solaris™ OpenWindows users and administrators in managing fonts.

This chapter explains how to open Font Administrator and describes the main window.

To Open Font Administrator

To open Font Administrator:

1. Click the Application Manager control in the CDE Front Panel's Applications subpanel.



2. In Application Manager, double-click the System_Admin folder.



3. In the System_Admin folder, double-click the Font Administrator icon.



Or you can enter the following command:

```
/usr/dt/bin/sdtfontadm &
```

Font Administrator's main window (Figure 1-1) appears, displaying a list of fonts currently installed on the local host. For a description of the main window, see "Font Administrator Main Window" on page 13.

Note – If you run Font Administrator via an X terminal, Font Administrator manages fonts on the host system, not on the X terminal. Also, if the fonts on the X terminal are different from the fonts on the host, Font Administrator may not be able to display appropriate sample text to the X terminal.

Font Administrator Main Window

Use the Font Administrator main window to view a list of currently installed fonts. You can also view attributes or sample text for a font.

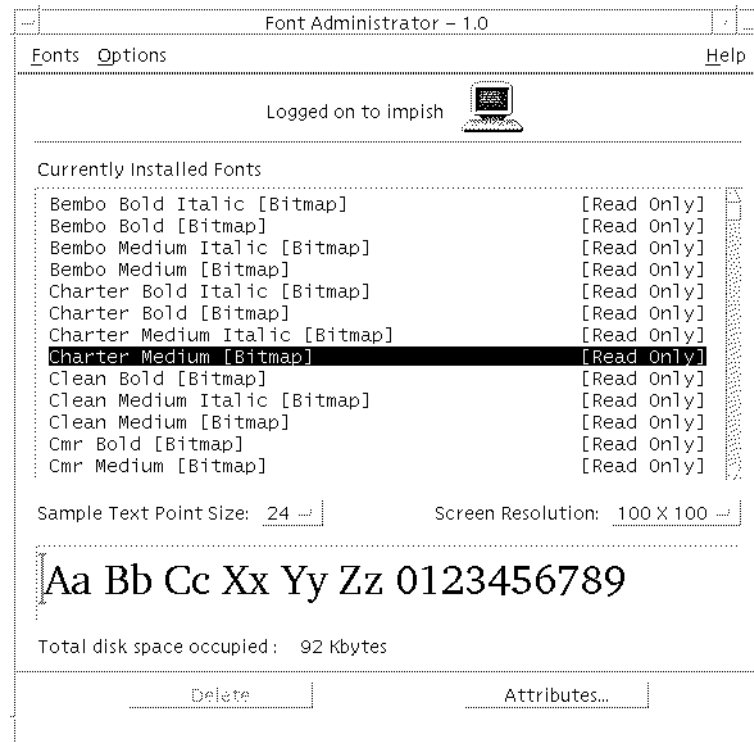


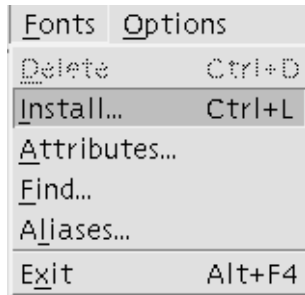
FIGURE 1-1 Font Administrator Main Window

The Font Administrator main window consists of the following parts:

- **Menu Bar** — Use the menus on the menu bar to access Font Administrator capabilities. The menu bar contains the Fonts menu, Options menu, and Help menu.
- **Currently Installed Fonts For** — Use these buttons to choose whether to manage fonts for the local host, or for a NeWSprint printer.
- **Font List** — The font list shows the fonts that are currently installed, and allows you to select a font for which to view attributes or to delete. To select multiple fonts, one method is to hold down the Shift key and click the desired fonts.

- **Sample Text Display** — The sample text display shows sample text for the currently selected font. You can type directly into this area to view other sample characters.
- **Sample Text Point Size** — Use the Sample Text Point Size option menu to choose a sample text size from the sizes available for the font. Choose a larger point size for larger text, or smaller for smaller text.
- **Screen Resolution** — Use the Screen Resolution option menu to select a different display resolution for the font, if available.
- **Total disk space occupied** — To assist you in managing your disk space, Font Administrator displays the total disk space occupied by the selected font.

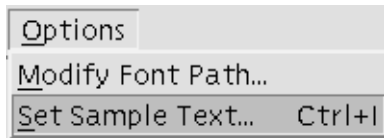
Fonts Menu



The Fonts menu lists the following choices:

- | | |
|------------|---|
| Delete | Deletes the selected font or fonts. |
| Install | Installs the fonts you choose. |
| Attributes | Displays attributes of the selected font. |
| Find | Searches the font list for the font you enter. You can enter a partial font name. |
| Aliases | Displays a list of currently installed font aliases. |
| Exit | Quits Font Administrator. |

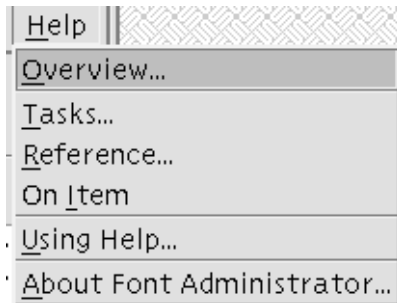
Options Menu



The Options menu lists the following choices:

- | | |
|------------------|----------------------------------|
| Modify Font Path | Makes changes to the font path. |
| Set Sample Text | Changes the default sample text. |

Help Menu



The Help menu lists the following choices:

- | | |
|--------------------------|--|
| Overview | Displays introductory information about Font Administrator features. |
| Tasks | Displays step-by-step instructions for using Font Administrator. |
| Reference | Displays summary information about Font Administrator components. |
| On Item | Changes the pointer to a question mark — click the question mark pointer on a Font Administrator item for its description. |
| Using Help | Displays information about using Help. |
| About Font Administrator | Displays version, copyright, and licensing information about Font Administrator. |

Viewing Fonts

This chapter explains how to view font lists, aliases, and sample text, and also explains how to delete fonts. It describes how:

- To view a list of fonts
- To view sample text
- To view font attributes
- To view font aliases
- To find fonts
- To delete fonts

To View a List of Fonts

You can view a list of fonts for local OpenWindows installations or for NeWSprint printers.

For the Local Host

To view a list of fonts installed on the local host:

1. On the main window, find the label "Currently Installed Fonts For:."
2. Click the radio button next to the local host name.

The main window (Figure 1-1) displays the list of currently installed fonts. For a description of the main window, see "Font Administrator Main Window" on page 13.

For a NeWSprint Printer

To view a list of fonts installed on a NeWSprint printer on the local print server:

1. On the main window, find the label “Currently Installed Fonts For:.”
2. Click the radio button next to NeWSprint Printer.
3. Use the NeWSprint Printer option menu to select the printer for which you want to manage fonts.

The main window (Figure 1–1) displays the list of currently installed fonts. For a description of the main window, see “Font Administrator Main Window” on page 13.

Note – You must run Font Administrator as the root user to be able to view and manage printer fonts.

To View Sample Text

You can type in sample text to view for this session only, or you can set the default sample text.

For This Session Only

To see what a word or phrase looks like using the selected font, type the word or phrase in the sample text display area of the main window or Install dialog.

For a picture and description of the main window, see “Font Administrator Main Window” on page 13. For a picture and description of the Install dialog, see “To Install Fonts” on page 23.

Setting the Default Sample Text

The default sample text is automatically displayed when you select a font in the main window or the Install dialog. For a picture and description of the main window, see “Font Administrator Main Window” on page 13. For a picture and description of the Install dialog, see “To Install Fonts” on page 23.

To set the default sample text:

1. Select Set Sample Text from the Options menu.



FIGURE 2-1 Set Sample Text Dialog

2. On the Set Sample Text dialog, click in the text box and type the desired text.
3. Click OK or Apply to save the sample text setting.

Note – Because the default sample text is a user preference stored in the user’s home directory, it cannot be set for the root user which has no home directory. The root user can type in the sample text display area to view other sample text.

To View Font Attributes

To view font attributes:

1. On the main window, click the font name for which you want to view attributes.
2. Click Attributes.

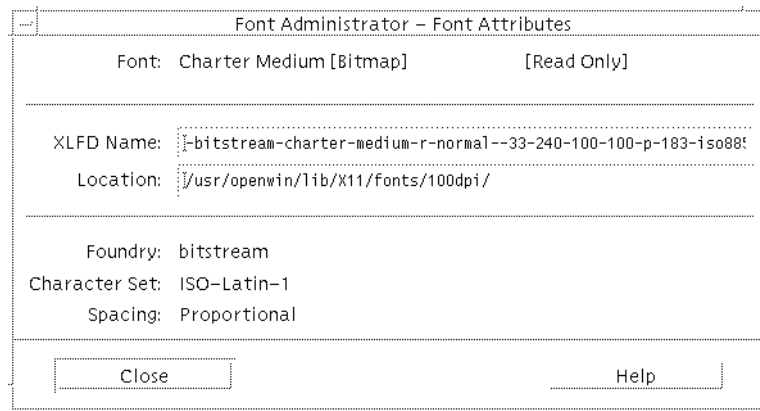


FIGURE 2-2 Font Attributes Dialog

The Font Attributes dialog displays the following information for the selected font:

Font	The common name of the font.
XLFID Name	The X logical font descriptor.
Location	The file system location of the font.
Foundry	The maker of the font.
Character Set	The character set used by this font.
Spacing	Indicates whether the font is monospaced or proportionally spaced.

Note – The Font Attributes dialog stays up until you click Close, displaying attributes in turn for each font you select. To view attributes for additional fonts, simply click the fonts one at a time in the list on the main window.

To View Font Aliases

To view font aliases, choose Aliases from the Fonts menu.

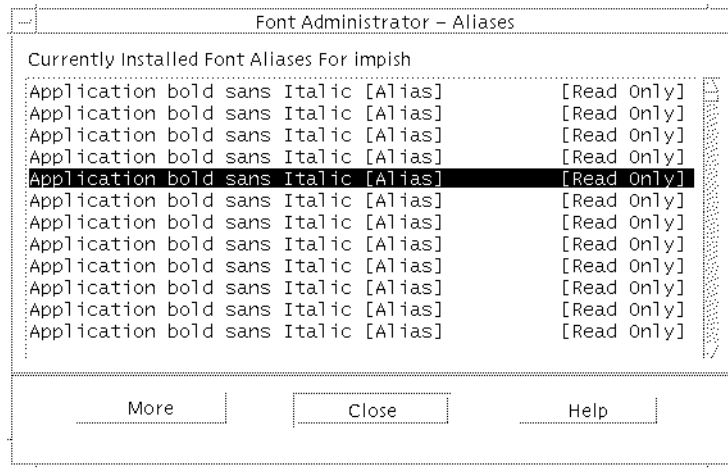


FIGURE 2-3 Aliases Dialog

The Aliases dialog lists the currently installed aliases. To view attributes for an alias, select the alias and click More. To hide alias attributes, click Less.

To Find Fonts

To search the list of fonts:

1. Choose Find from the Fonts menu.

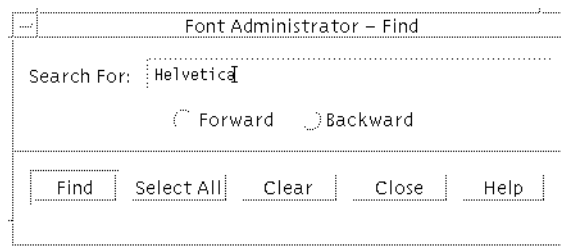


FIGURE 2-4 Find Dialog

2. On the Find dialog, enter the font name in the Search For field.
3. Click Forward to search from the selected font toward the bottom of the list, or click Backward to search from the selected font toward the top of the list.

4. Click Find to select the next font name containing the search text, or click Select All to select all font names containing the search text.

To Delete Fonts

To delete a font or fonts:

1. On the main window, select the font to delete by clicking on its name. To select multiple fonts to delete, hold down the Shift key and click the desired fonts. For a picture and description of the main window, see "Font Administrator Main Window" on page 13.



Caution – There is no Undo for deleting fonts. Before deleting fonts, check that no one needs the fonts you want to delete.

2. Click Delete.
3. On the warning dialog, click Delete to confirm the deletion.

Note – To delete fonts from the shared system directory `/usr/openwin`, you must run Font Administrator as the root user.

Making Fonts Available

This chapter explains how to install fonts, modify the font path, and use the directory chooser.

To Install Fonts

To install fonts:

1. Choose Install from the Fonts menu.

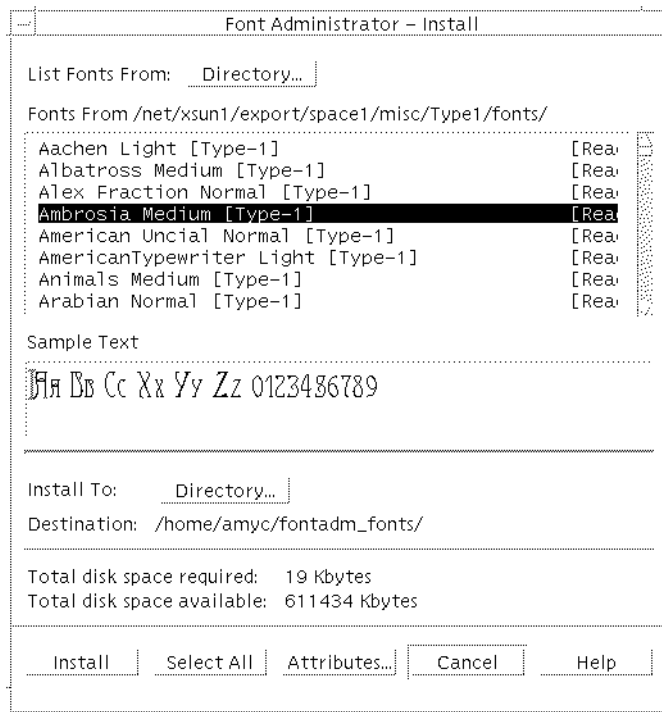


FIGURE 3-1 Install Dialog

2. At the top of the Install dialog, click the List Fonts From Directory button.

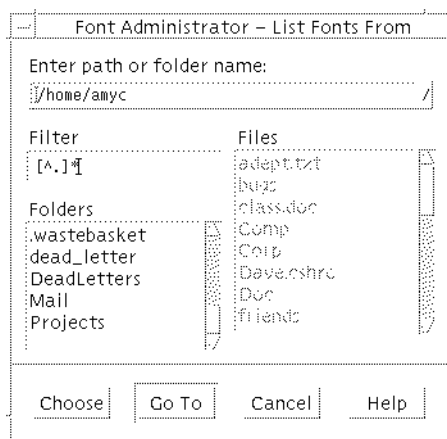


FIGURE 3-2 Directory Chooser

3. Use the directory chooser to browse for and select the directory containing the fonts you want to install. When you find the directory you want, double-click the directory, and then click Choose to display a list of fonts in the directory. For more information about the directory chooser, see “To Use the Directory Chooser” on page 30.

Note – There may be a pause while Font Administrator searches for fonts in the directory you choose.

4. On the Install dialog, select the font or fonts you want to install. If you want to install all the fonts, click Select All.
5. Choose the local host or a printer for which to install fonts.
6. Use the directory chooser to browse for and select the installation destination directory. For more information about the directory chooser, see “To Use the Directory Chooser” on page 30.
7. Check that the disk space available is greater than the disk space required.
8. Click Install.

Note – To install fonts to the shared system directory `/usr/openwin`, you must run Font Administrator as the root user.

To Resolve Conflicts

If there is a conflict between a font you tried to install, and a font with the same name that has already been installed, Font Administrator displays the conflict dialog.

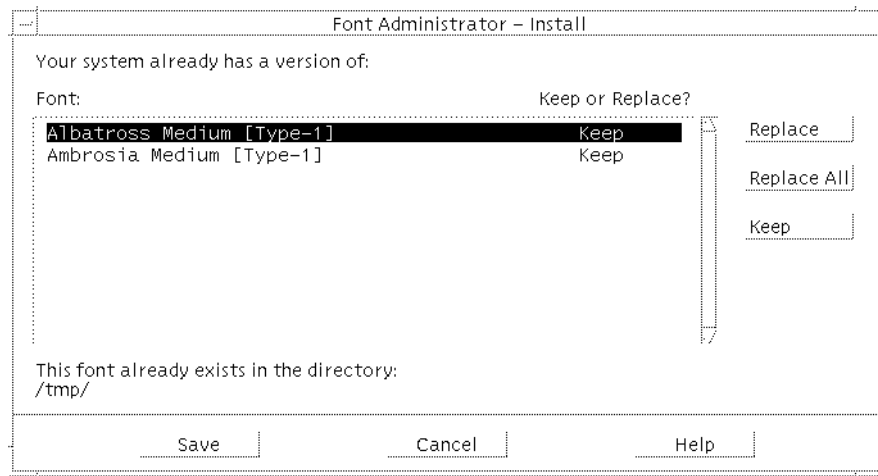


FIGURE 3-3 Conflict Dialog

The conflict dialog lists the fonts you tried to install that already exist on your system.

To Keep All Fonts

To keep all of the previously installed fonts, click Save.

To Replace All Fonts

To replace all fonts:

1. Click Replace All.
2. Click Save.

To Replace Selected Fonts

To replace selected fonts:

1. Click a font you want to replace.
2. Click Replace.
3. Repeat steps 1 and 2 for each font you want to replace.
4. When you have completed steps 1 and 2 for each font you want to replace, click Save.

To Add the Installation Directory to the Font Path

When you, as the root user, install a font into a directory that is not in the default font path, Font Administrator offers to add it to the default font path for you automatically. You can also choose to add it manually via the Modify Font Path dialog.

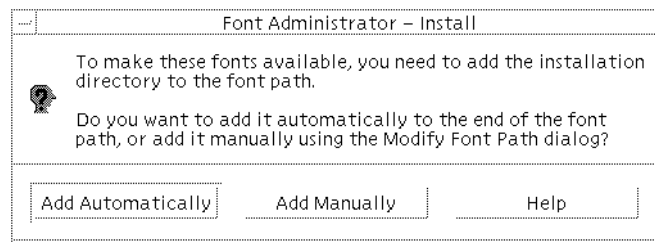


FIGURE 3-4 Add Installation Directory Dialog

Note – This dialog only appears if you run Font Administrator as the root user. For other users, Font Administrator appends the installation directory to the user’s font path. The change to the user’s font path lasts until the user quits Font Administrator.

To Modify the Font Path

Modifying the font path may include the following subtasks:

- To List the Font Path
- To Reorder the Font Path
- To Delete Font Path Elements
- To Add Font Path Elements

Note – To modify the font path, you must run Font Administrator as the root user.



Caution – The default font path is shared. Modifying the default font path will affect all users who reference it.



Caution – Installing OpenWindows will initialize the default font path. You may want to keep a record of the changes you make to the default font path, so that you can recreate them if you install OpenWindows.

To List the Font Path

To list the font path you want to modify:

1. Choose Modify Font Path from the Options menu.

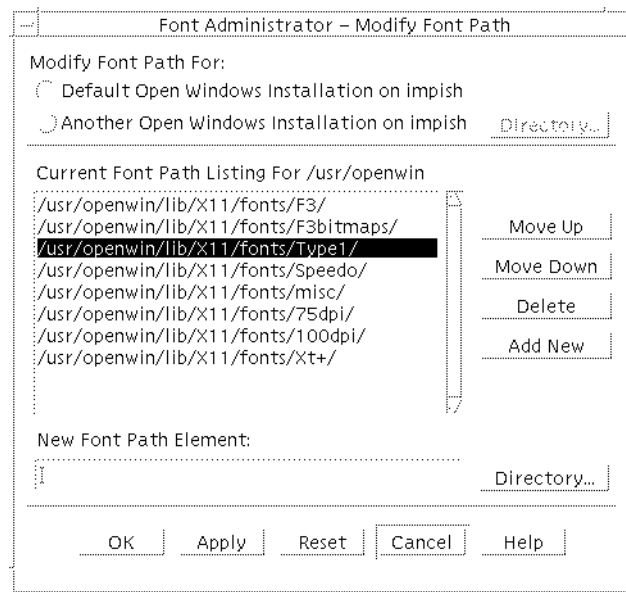


FIGURE 3-5 Modify Font Path Dialog

2. On the Modify Font Path dialog, click the appropriate radio button for the font path you want to modify.
3. If you are modifying the font path for another OpenWindows installation on the local host, click Directory and use the directory chooser to select the alternative OpenWindows installation. For more information about the directory chooser, see “To Use the Directory Chooser” on page 30.
4. If you are modifying the font path for a NeWSprint printer, select the printer on the printer option menu.

Font Administrator lists the font path you choose.

To Reorder the Font Path

To reorder the font path:

1. Choose Modify Font Path from the Options menu.
2. On the Modify Font Path dialog (Figure 3-5), list the font path to modify.
3. Click the font path element you want to move.
4. Click Move Up or Move Down to place the font path element where you want it.
5. Repeat steps 3 and 4 until the font path elements are in the order you want.
6. Click OK or Apply to apply the changes.

To Delete Font Path Elements

To delete font path elements:

1. Choose Modify Font Path from the Options menu.
2. On the Modify Font Path dialog (Figure 3-5), list the font path to modify.
3. Click the font path element you want to delete.
4. Click Delete.
5. Repeat steps 3 and 4 until you have deleted the elements you want to delete.
6. Click OK or Apply to apply the changes.

To Add Font Path Elements

To add font path elements:

1. Choose Modify Font Path from the Options menu.
2. On the Modify Font Path dialog (Figure 3-5), list the font path to modify.
3. Click in the New Font Path Element text box.
4. Either type the new font path element, or click Directory to use the directory chooser to browse for and select the directory that you want to add to the font path. When you find the directory you want, double-click the directory, and then click Choose to enter the directory in the New Font Path Element text box. For more information about the directory chooser, see “To Use the Directory Chooser” on page 30.
5. On the Modify Font Path dialog, click Add New.
6. Repeat steps 3 to 5 until you have added the font path elements you want to add.
7. Click OK or Apply to apply the changes.

To Use the Directory Chooser

Use the directory chooser to:

- Choose the directory containing fonts to install.
- Choose the destination directory for font installation.
- Choose the directory containing the OpenWindows installation for which you want to modify the font path.
- Choose the directory to add to the font path.

Note – The title bar indicates the current reason for displaying the directory chooser.



FIGURE 3-6 Directory Chooser

The directory chooser consists of the following parts:

Enter path or folder name	Type and/or view the path to go to. To choose a directory from a diskette or CDROM, click the option arrow and select the desired type of drive.
Filter	Display only those files and folders that match.
Folders	When you go to a directory, lists its subdirectories.
Files	When you go to a directory, lists its files.
Choose	Choose the last directory for which you did a Go To.

Go To

Display a list of folders and files for the directory named at the top of the directory chooser.



Caution – If you click a folder but do not click Go To, the folder name appears at the top of the directory chooser but the parent directory is still selected. To avoid choosing the parent directory by accident, always double-click or Go To the folder you want.

Note – The Files list is always greyed out, because the task is to choose a directory (a folder), not a file.

Font Administrator Messages

This appendix lists Font Administrator messages together with likely causes and solutions.

path already exists in font path

The path you entered is already in the font path.

Possible Solution

No action is necessary.

text is not a directory

The information you entered is not a directory. Only directories may be added to the font path.

Possible Solution

Check that the font path element you enter is a directory.

path does not exist

The path you entered does not exist.

Possible Solutions

- Check that you entered the path correctly.
- Create the desired path before adding it to the font path.

Your system is mounting OpenWindows from a server.

Your OpenWindows server, which contains the fonts used by your applications, is on a remote system. Font Administrator manages fonts on the local system.

Possible Solutions

- Ask your system administrator to help you.
- If you are the administrator, run Font Administrator on the same system running your OpenWindows server.

Unable to add the installation directory automatically to the font path

Font Administrator could not automatically update the font path. For users to have access to the installed fonts, the installation directory must be in the font path.

Possible Solution

Check that you have write privileges on the font path.

Error while saving font path for local printer

There was a problem with either the printer configuration file, or the `$OPENWINHOME/lib/fonts` directory.

Possible Solutions

- Check that the printer configuration file exists and is not corrupted:
`/etc/lp/printers/printer_name/.param`
- Check that the `$OPENWINHOME/lib/fonts` directory exists.

Font Administrator Utilities

This appendix lists and describes the Font Administrator command-line utilities. The utilities are:

<code>sdtfpadd</code>	Adds elements to the font path.
<code>sdtfpls</code>	Lists font path elements in a comma-separated list.
<code>sdtfprm</code>	Removes elements from the font path.
<code>sdtfontadd</code>	Installs fonts in the specified directory.
<code>sdtfontls</code>	Lists fonts in the specified directory.
<code>sdtfontrm</code>	Removes fonts from the specified directory.

Adding Font Path Elements (`sdtfpadd`)

This utility adds the specified element to the font path. The new element may be added at any position in the font path. Only the root user can run this utility.

Command Syntax

```
/usr/dt/bin/sdtfpadd [-e topdir] position font_path_element
```

where:

`-e topdir` Specifies the directory containing the OpenWindows installation for which to modify the font path. If not specified, the default is `/usr/openwin`.

<i>position</i>	Specifies the position in the font path at which to insert the new font path element. The value must be either <i>first</i> or <i>last</i> or a positive integer indicating into which position to insert the new element.
<i>font_path_element</i>	Specifies the directory to add to the font path.

Listing Font Path Elements (sdtfpls)

This utility lists font path elements in the user's personal font path setting, or for the root user, lists the font path for the specified OpenWindows installation.

Command Syntax

```
/usr/dt/bin/sdtfpls [-e topdir]
```

where *-e topdir* is only meaningful for the root user, and specifies the directory containing the OpenWindows installation for which to list the font path. If not specified, the default is */usr/openwin*.

Removing Font Path Elements (sdtfprm)

This utility removes the specified font path element. Only the root user can run this utility.

Command Syntax

```
/usr/dt/bin/sdtfprm [-e topdir] font_path_element
```

where:

<i>-e topdir</i>	Specifies the directory containing the OpenWindows installation for which to modify the font path. If not specified, the default is <i>/usr/openwin</i> .
<i>font_path_element</i>	Specifies the directory to remove from the font path.

Installing Fonts (sdtfontadd)

This utility installs fonts to the directory you specify.

Command Syntax

```
/usr/dt/bin/sdtfontadd [-e dir] [-v] [-f] [font_name ...] fromdir todir
```

where:

- e *dir* If the user is the root user, the font path for the OpenWindows installation in this directory will be updated as necessary. That is, if *todir* is not in the font path, `sdtfontadd` appends it to the font path. If this option is not specified, the default is `/usr/openwin`.
- v Runs `sdtfontadd` in verbose mode, displaying a message to standard output (usually the monitor) as each font is installed.
- f Runs `sdtfontadd` with no user interaction. If a conflicting font is read-only, it is not overwritten. Otherwise, conflicting fonts are replaced by the new font.
- font_name ...* Represents a list of fonts to install.

Note – Type quotes around font names to make sure that they are interpreted correctly.

If no font is specified on the command line, `sdtfontadd` expects to receive font names from standard input (usually the keyboard).

- fromdir* Specifies the directory from which `sdtfontadd` will copy the fonts.
- todir* Specifies the directory into which `sdtfontadd` will install the fonts.

Listing Fonts (sdtfontls)

This utility lists fonts in a directory.

Command Syntax

```
/usr/dt/bin/sdtfontls [-x] [dir]
```

where:

- x Lists fonts by their X Logical Font Descriptor or XLFD name. Bitmap (PCF) and Type 1 fonts are listed by their XLFD names. Font types that have no XLFD name and are only accessible through Display Postscript, such as Type 3 and Type 0, are not listed.
- dir* Specifies the directory to list fonts from. If no directory is specified, the default is the current directory.

Removing Fonts (sdtfontrm)

This utility removes the fonts you specify from a directory.

Command Syntax

```
/usr/dt/bin/sdtfontrm [-e dir] [-v] [-f] [font_name ... ] fromdir
```

where:

- e *dir* If the user is the root user, the font path for the OpenWindows installation in this directory will be updated as necessary. That is, if *fromdir* becomes empty as a result of removing fonts, *sdtfontrm* removes it from the font path. If this option is not specified, the default is */usr/openwin*.
- v Runs *sdtfontrm* in verbose mode, displaying a message to standard output (usually the monitor) as each font is removed.
- f Runs *sdtfontrm* with no user interaction. Conflict situations may arise if there are read-only or system fonts on the list of fonts to remove. When the -f option is used, system fonts will be deleted, but read-only fonts will not be deleted.
- font_name ...* Represents a list of fonts to remove.

Note – Type quotes around font names to make sure that they are interpreted correctly.

If no font is specified on the command line, `sdtfontrm` expects to receive font names from standard input (usually the keyboard).

fromdir Specifies the directory from which `sdtfontrm` will remove fonts.

Asian Font Sets

In Asian-language applications, multiple fonts of different character sets must be grouped together to create an accurate representation of written language on the screen. These groupings are called *font sets*.

Font Administrator provides the ability to edit font sets. First, you can search for font sets that meet your search criteria. Then you can change the fonts that make up a font set, or you can add missing fonts to complete an incomplete font set.

This appendix explains how to use Font Administrator to edit Asian font sets.

Note – The information in this appendix only applies to Asian fonts users. Disregard this information if you do not use Asian fonts.

Searching for Font Sets

To search for font sets:

1. Choose Font Sets from the Options menu.

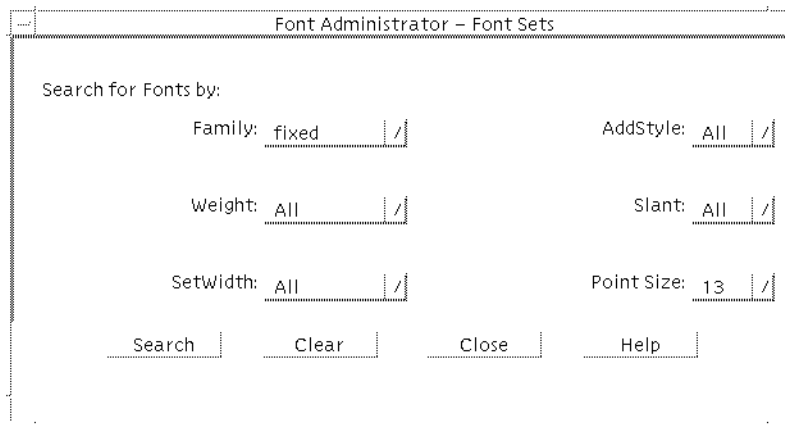


FIGURE C-1 Font Sets Search Dialog

2. On the Font Sets Search dialog, use the Family option menu to select the font family to search for.
3. Use the Point Size option menu to select the point size to search for.
4. Optionally, you may select any other attributes you would like to search for.
5. Click Search.

Font Administrator displays the search results, if any, on the Replace Font Set Elements dialog.

Replacing Font Set Elements

To replace font set elements:

1. Search for font sets as described in “Searching for Font Sets” on page 43.

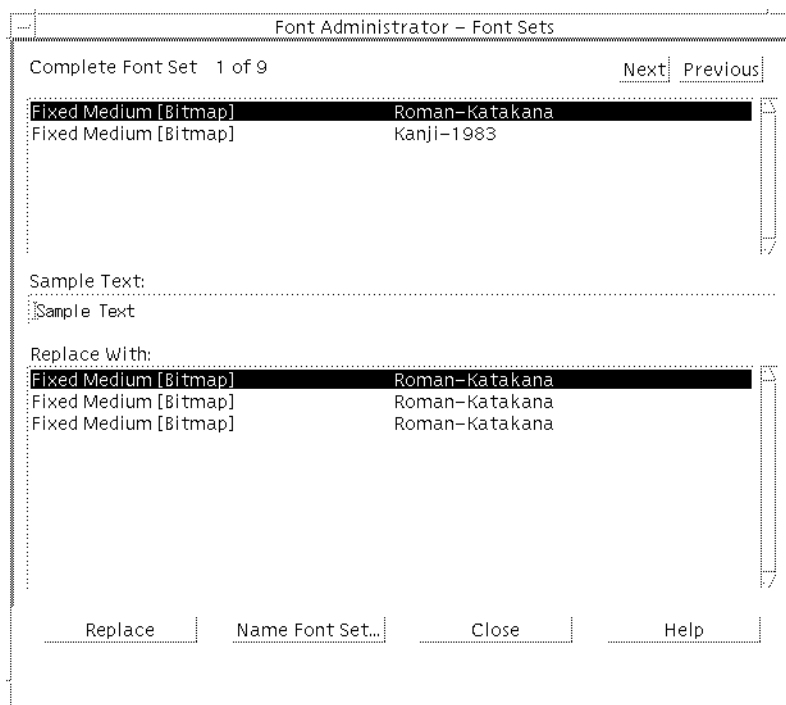


FIGURE C-2 Replace Font Set Elements Dialog

2. In the list of font set elements, click the element to replace. This may be either a font or the word “Missing” if the font set is incomplete.
3. Choose a replacement by clicking it in the replacements list.
4. Click Replace.
5. Repeat steps 2 through 4 for each element you want to replace.
6. When you have finished replacing font set elements, click the Name Font Set button.
7. Name the font set as described in “Naming Font Sets” on page 46.
8. If there is another font set to modify, click Next or Previous until the font set is displayed. Repeat steps 2 through 7 for each font set you want to modify.

Naming Font Sets

To name a font set:

1. Search for font sets as described in “Searching for Font Sets” on page 43.
2. Replace font set elements as described in “Replacing Font Set Elements” on page 44.

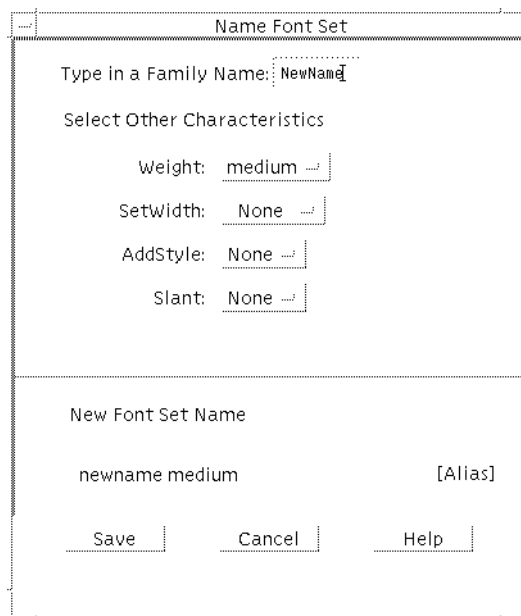


FIGURE C-3 Name Font Set Dialog

3. On the Name Font Set dialog, enter a family name for the font set.
4. Optionally, you may select other characteristics for the font set. By default, the characteristics are set to None. Font Administrator creates an alias using the family name and characteristics that you choose. This alias appears in the lower part of the dialog, in the New Font Set Name area.
5. When you are done entering the name and characteristics, click Save.

If the alias is unique, Font Administrator saves it in the `/etc/openwin/fontadm_fonts/fonts.alias` file. If it is not unique, Font Administrator prompts you to enter a unique alias.

Index

A

aliases, font
 viewing, 20
Asian font sets, 43, 46
attributes, font
 list of, 20
 viewing, 19

C

chooser, directory
 using, 30
command-line utilities, 37, 41

D

deleting fonts, 22
directory chooser
 Caution notice, 31
 dialog box, 30
 using, 30

E

error messages, 33, 35

F

finding fonts, 21

Font Administrator

 main window, 13
 opening, 11
font aliases
 viewing, 20
font attributes
 list of, 20
 viewing, 19
font path
 Caution notices, 27
 modifying, 27, 29
font sets, Asian, 43, 46
Fonts menu, description, 14

H

Help menu, description, 15

I

installing fonts, 23, 27
 conflict resolution, 25
 font path update, 27

L

listing fonts
 for a NeWSprint printer, 18
 for the local host, 17

M

main window, description, 13

O

Options menu, description, 15

P

path, font

 Caution notices, 27

 modifying, 27, 29

printers, viewing fonts for, 18

R

removing fonts, 22

S

sample text

 setting default, 18

 viewing, 18

sdtfontadd utility, 39

sdtfontls utility, 39

sdtfontrm utility, 40

sdtfpadd utility, 37

sdtfpls utility, 38

sdtfprm utility, 38

searching for fonts, 21

U

utilities, command-line, 37, 41

V

viewing fonts

 for a NeWSprint printer, 18

 for the local host, 17

X

X terminals, usage note, 12